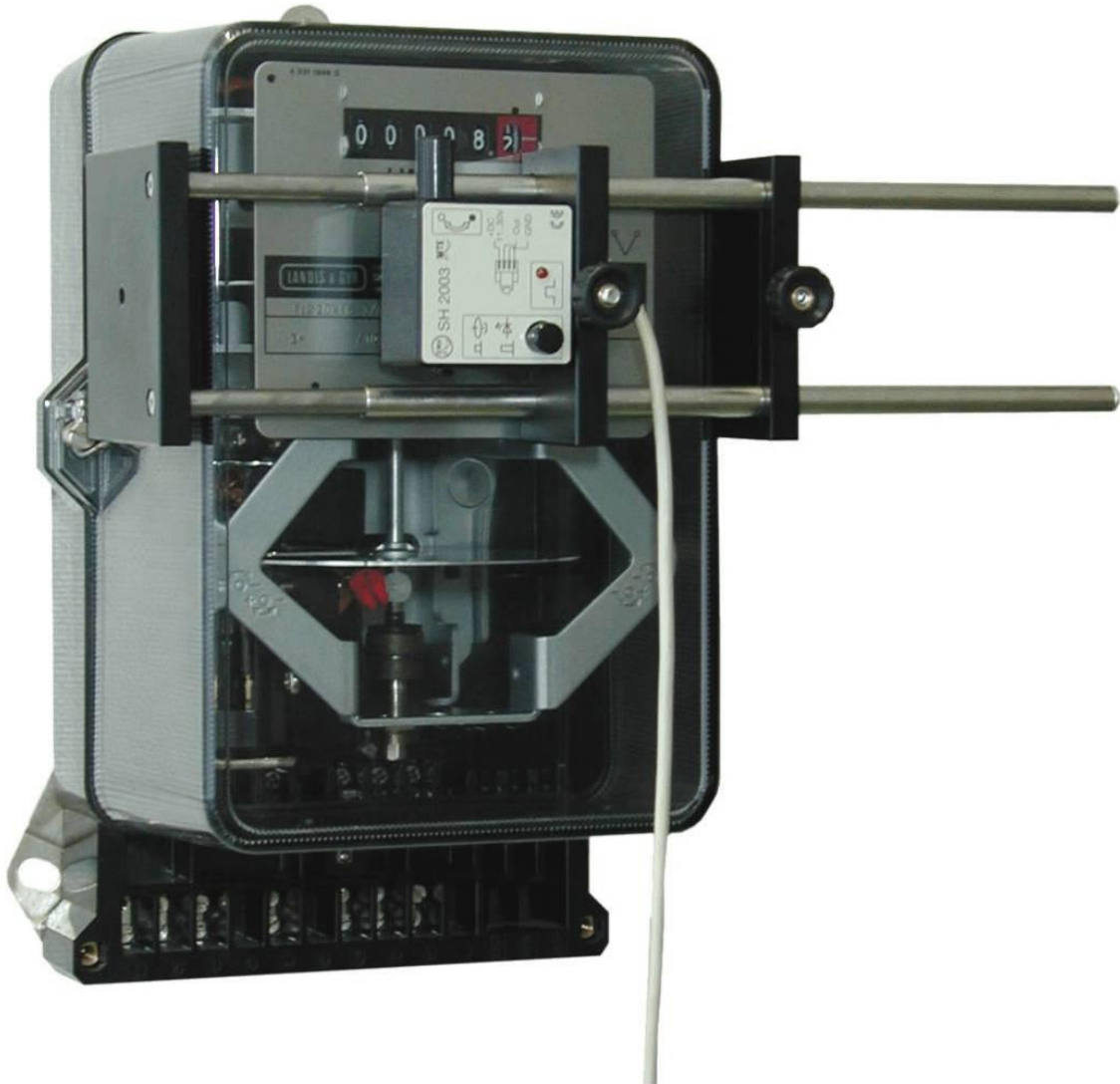


SCD 2003

Scanning Head Support for SH 2003



The SCD 2003 scanning head support was designed for on-site meter testing with the SH 2003 photoelectric scanning head.

The spring mechanism and the different adjusting options make it possible to attach the scanning head support to the meter as desired.

Advantages

Virtually all commonly available meter types may be tested by the large fixation range.

The integrated spring wire provides a fast and simple method for fixing the scanning head support to the meter.

Because of the high repeatability of the measuring position several meters of the same type can be tested efficiently.

Fine adjustment is used for the precise positioning of the scanning head.

Functions

Adjusting to below size and pulling out the spring loaded mountings produces the required force to attach the scanning head securely to the meter.

The fixation range is determined by displacement of the upper plate and fixed with a locking screw.

The mounting board of the scanning head can be adjusted at height so that a fine alignment of the scanning head is possible.

Application

The SCD 2003 scanning head support is used to test meters on sites at which fast and simple handling is required.

Option

Adapter for ANSI meters

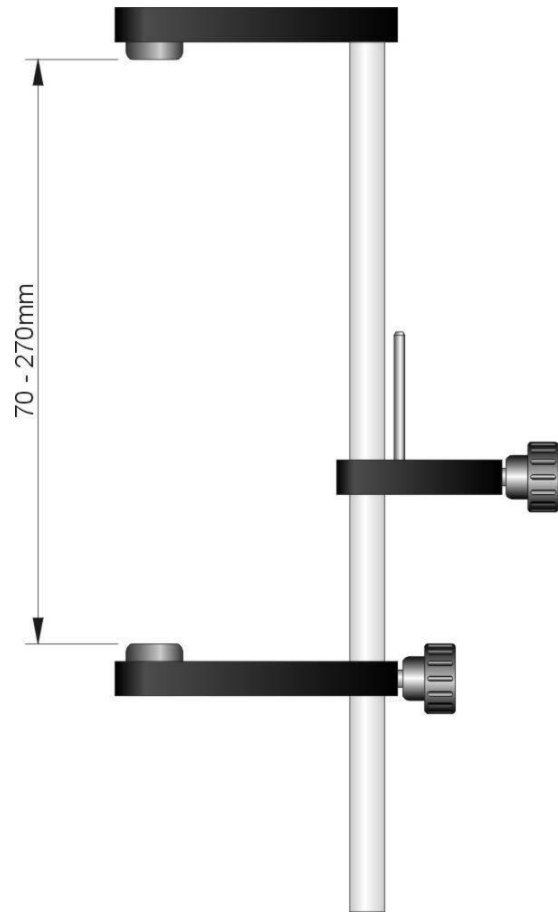
Technical data

Weight:	200g
Dimensions:	W 70 x D 100 x H 200
Fixation range:	70 - 270mm
Material of support:	plastic, black
Material of spring rod:	stainless steel
Material of contact faces:	rubber, black

Operating instructions

For the optimal fixing of the scanning head the instructions below should be regarded step by step:

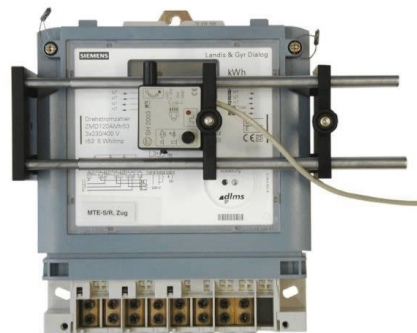
1. Define the position of use of the scanning head support, vertical or horizontal.
2. Determine the fixation range referring to the size of the meter under test.
3. Tune the elasticity by moving the upper support by about $\frac{1}{4}$ of the fixation range in direction to the scanning head.
4. Put the scanning head support onto the meter under test. The holding force is produced by the integrated spring wire and if required can be enlarged in accordance with point 3.
5. Loose the locking screw of the mounting board and adjust the scanning head at height to the optimal position.



Applications



Vertical application for IEC meters



Horizontal application for IEC meters



Vertical application for ANSI meters



Application by side for ANSI meters (Option)